

A low-angle, upward-looking photograph of the Greenland Tower in Chengdu, China. The tower is a tall, slender skyscraper with a highly faceted, crystalline facade made of glass and steel. It tapers slightly as it rises. The sky is a clear, solid blue. The text "Greenland Tower" is centered in the upper half of the image in a white, sans-serif font.

# Greenland Tower

Chengdu, China

ADRIAN SMITH+GORDON GILL  
ARCHITECTURE

# Greenland Tower Chengdu, China

At 468 meters tall, AS+GG's design for Greenland Tower Chengdu will produce southwestern China's tallest building and the fourth-tallest in the nation.

SERVICES  
Architecture

CLIENT  
Greenland Group

FUNCTION  
Mixed-use

FACTS  
468 m height

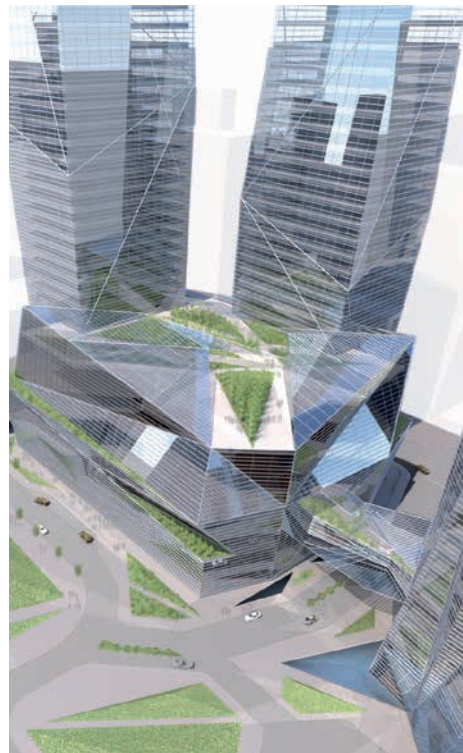
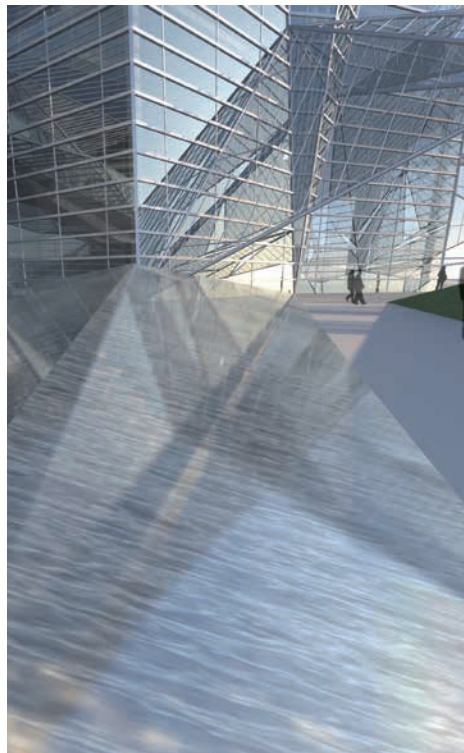
Located at the center of Dongcun, Chengdu's booming residential district, the design was inspired by the unique ice mountain topography that surrounds the city. Like the mountain ridges, the tower will act as a light sculpture that diffuses and reflects light 360 degrees.

The building interprets and integrates Chengdu's urban structure, local culture, and traditional Feng Shui theory to create a contextual, and modern, form. The development will become a "garden city" environment with enjoyable public spaces and convenient traffic patterns for vehicular, pedestrian, and metro transportation. The design considers the structural requirements of supertall buildings in a high seismic zone by using a geometrical plan, a tapered form, and a high-performance damper bracing system, ensuring the building's stability and efficiency. The building façade, MEP, and other systems are designed with high-efficiency sustainability features.

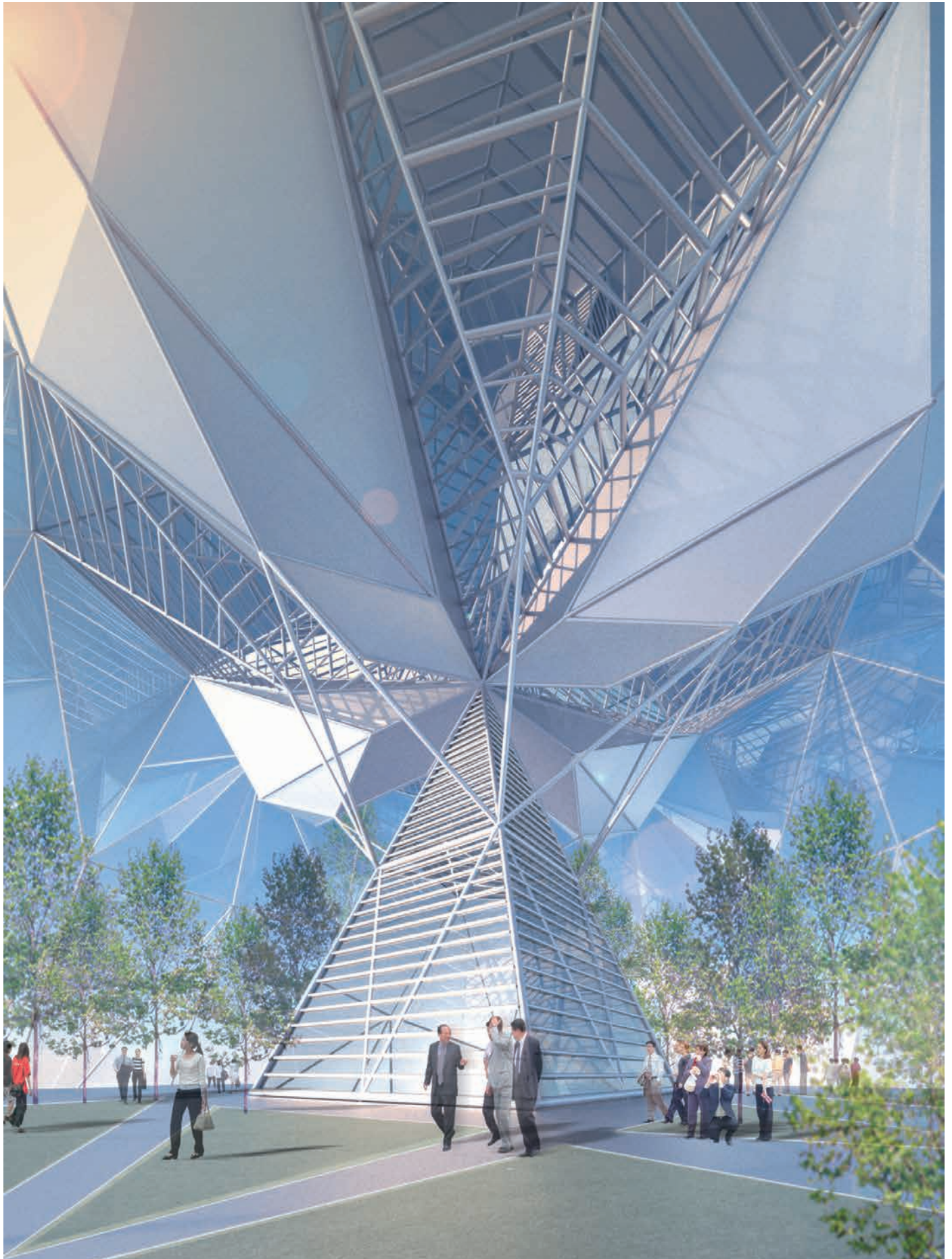
The project includes the main tower, a six-story podium, and two small towers, with a gross floor area of over 300,000 sm. The main tower consists of 120,000 sm Class A office space in the lower zone, a 51,000 sm luxury hotel in the middle zone, and 42,000 sm of CEO suites in the upper zone. There is also a roof garden with 360-degree views of the city. The podium includes 14,000 sm of retail, a 16,000 sm conference center with bridge connection to the main tower, and an 8,000 sm exhibition center. The two small towers, at 116m and 147m height, accommodate high-end SOHO residential apartments.







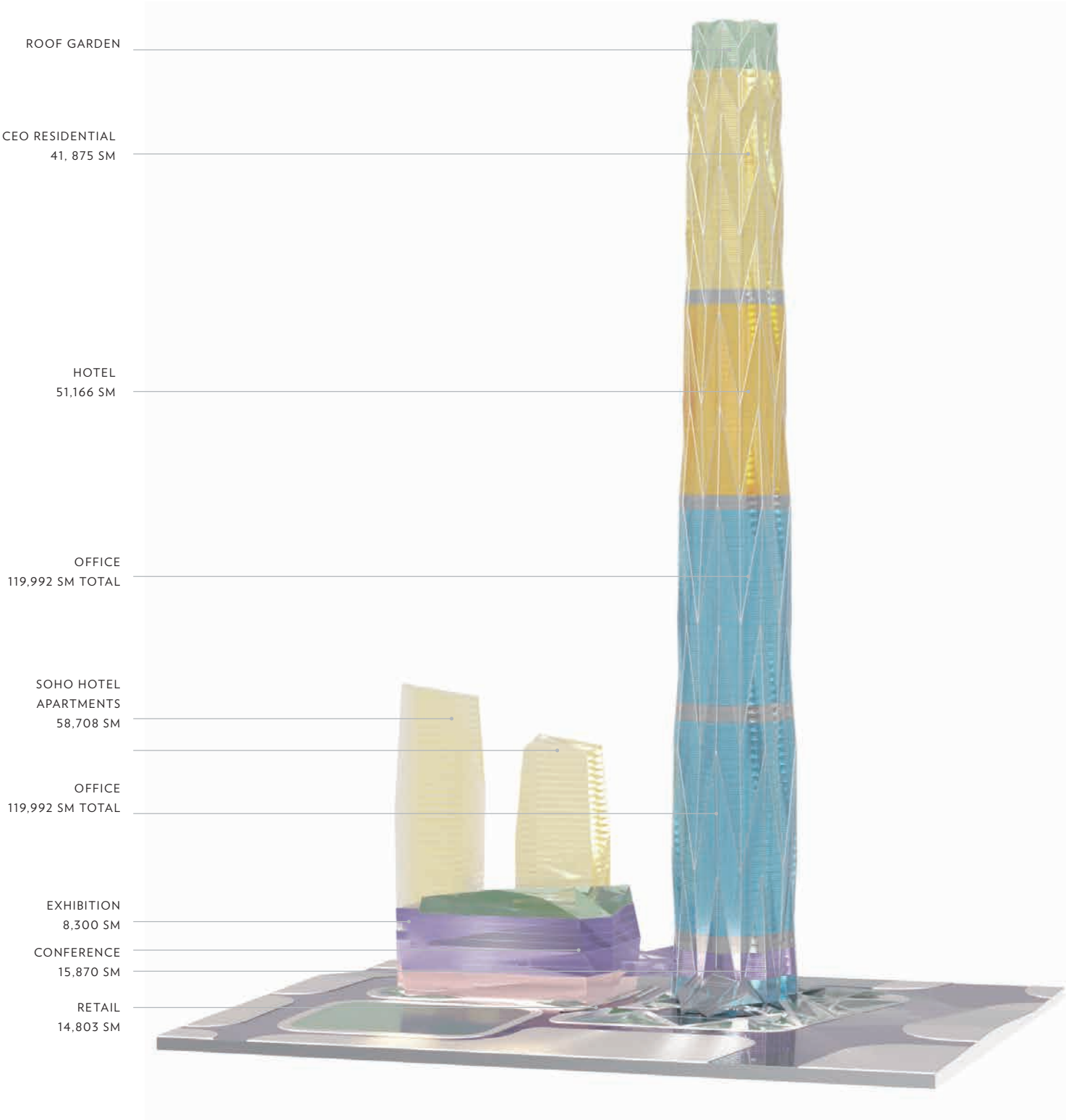








PROGRAM DIAGRAM









ADRIAN SMITH+GORDON GILL  
ARCHITECTURE

GREENLAND TOWER CHENGDU